

2021

kids on the move
empowering families, one child at a time



Fiscal Year Report

2020-2021



Our Team



kids on the move
empowering families, one kid at a time



Chief Executive Officer
Rachelle Rutherford

Chief Operating Officer
Ryan Erickson

Chief Financial Officer
Mat Dastrup

Vice President of Development
Ruby Haddock

Kids On The Move
475 West 260 North
Orem, UT 84057
801.221.9930
development@kotm.org

Contents

4	A Family Focus
6	Our Mission
7	Board of Directors
8	Program Overview
10	Autism Center
13	Child Care
16	Early Head Start
26	Early Intervention
30	Respite Care
34	Volunteers
36	Finances
37	Donors



A Family Focus

At Kids On The Move, the family is our focus! We were triumphant in 2021 in effort and perseverance as we rallied together to support children and families.

“The thing we want to do most of all is celebrate our families,” said Karen Hahne, one of the founders, nearly 30 years ago. “The family sets the goals, and we try to help and support them. If we can help the family, the children will be all right.”¹ Our organization continues to expect a bright future for all children, and we are committed to our mission in supporting the development of young children and families.

Kids On The Move (KOTM), from its early beginnings, focused on bringing needed resources to the community. As we look to the future, we will continue to identify the best way to help support these families. Together, we can make a difference as we overcome challenges in our community.

The demand for Autism services in Utah continues to rise with 1 in 33 eight-year-old boys and 1 in 108 eight-year-old girls being diagnosed with Autism². We are grateful for the community support we receive to provide services to families across the state. This support allows us to simultaneously focus on increasing our capacity to serve more children.

Our Child Care Center provides a tremendous service to our employees and working parents throughout the community who need care for their young children. Our center alone experienced a 50% increase in full-time children in 2021. In Utah County, the current facility capacity among all child care providers is 6,404 children, leaving 26,887 children under age six in need of child care services. Currently, 54% of Utah children under age six are living in families for which there is a child care need. This rate equates to 157,345 children needing child care without adequate facilities³.

¹ Outpouring of Support Helps Kids On The Move Realize Dreams - Deseret News, August 1992

² URAD, 2016

³ Child Care Access in Utah Work Force Services Report, March 2020

Many of our programs will have greater needs as the growing population creates a higher demand on services. The Respite Care program continues to offer a much-needed rest for families, giving them the opportunity to rejuvenate and reset. Early Intervention enhances early growth and development in infant and toddlers who have developmental delays or disabilities. We provide services to families within the Alpine School District, the largest school district in Utah⁴. Our Early Head Start program serves low income and pregnant women who reside within Utah County. The U.S. Census Bureau and Gardner Policy Institute report Utah County through 2060 to be the fastest-growing county in terms of absolute growth, or total people over the next four decades. Analysts estimate that nearly 674,000 residents will end up in Utah County⁵.

Families are our future! With the generous and collaborative efforts of donors, Kids On The Move will successfully create a bright future for as many children and families who need these essential services. We will continue to be available for the thousands of families who need us every year. Your continued support will help to make this happen, now and in the future.

Sincerely,



Rachelle D. Rutherford, CEO



⁴ Deseret News, After Year of Pandemic, October 2021

⁵ Utah's growth rate to fall, but population will still increase 66% in the next 40 years | KSL.com January 2022

Our Mission



Kids On The Move is committed to empowering families, one child at a time.

Special Education Best of State winner, Kids On The Move supports the development of children and families in our community. Our programs are: Autism Center, Child Care, Early Head Start, Early Intervention, and Respite Care. In addition, Kids On The Move contributes time and resources to create and sustain a community-wide network of support.

In 2021, Kids On The Move provided innovative, high quality, direct services to **2,721** children challenged by poverty, developmental delays, autism, and other disabilities.

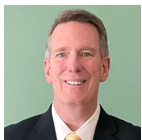
Board of Directors



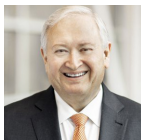
Jonathan Krein, *Chair*, is Chief Scientist of Data Science & Software Engineering at Crimson Vista, an active consultant in the software industry, and Co-founder and Managing Partner of Source Code Discovery.



Christy Anderson, *Chair Elect*, has been in the nursing profession for twenty years and has spent the last twelve as an Acute Care Nurse Practitioner at Utah Surgical Associates.



Ed Donakey, *Former Chair/Development Committee Chair*, is Vice President of Strategic Relations and Deputy Chief Genealogical Officer at FamilySearch International.



Richard Rife, *Secretary*, has had a 40-year career as a corporate attorney with an international focus, serving as EVP and Chief Legal Officer for several large, publicly traded corporations.



Michael Frandsen, *Finance Committee Chair*, is a founding partner of Frandsen Morrill Advisors, an independent financial planning firm.



Kim Santiago, *Strategic Planning Chair*, is a Registered Oncology Nurse and currently serves on various boards in Utah County to help connect families and individuals with resources in our community.

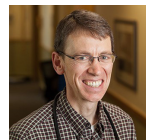
Robert Parsons, *Finance Committee Member*, currently serves as the Executive VP of an international travel organization. He has worked as a strategy and business developer as well as Chief Financial Officer of multiple companies.



Kai Khasbaatar is an assistant professor for Mongolian Language and Culture in College of Humanities department. She also works on special projects of Food Safety Cooperation with Mongolian Agricultural Department Rutherford at BYU.



Ernie Bailey is a pediatrician specializing in infectious disease and nutrition and helping children of all ages.



Stevenson Smith, *Program Committee Member*, is a Certified Public Accountant specializing in income taxation. He currently owns an accounting firm in Provo, Utah.



Jon Standing, *Program Committee Chair*, is a special education teacher in the Alpine School District. He has been teaching a special life skills class for children with special needs for 29 years.



Program Overview



Autism Center

The Kids On The Move Autism Center is a leading provider for children from toddler age through adolescence living with autism spectrum disorder. We offer Applied Behavior Analysis (ABA) Therapy services in our clinic, in client homes, or a combination of both. We also provide ABA Therapy via telehealth throughout the entire state of Utah.



Child Care

Our Child Care program has been in operation for 25+ years. It is a fully-licensed program with four separate classrooms, divided by age and development. Our caring teachers provide support and instruction for children from six weeks to five years old. It is important that our Child Care staff carry out their responsibilities in a manner that builds each child's well-being every day.



Early Head Start

Early Head Start is designed to enhance children's physical, social, emotional, and intellectual development by supporting parents in their critical role. The program aims to help children develop a lifelong love of learning. Our services include educational, social, nutritional, mental health, parent involvement activities for families, and family education on the importance of medical and dental visits. The cost of involvement in the program is completely free.



Early Intervention

In Early Intervention, we know there are many wonderful and exciting opportunities for learning and growth during the first few years of life. We provide a free evaluation of a child's development and serve children who have delays in the following areas: communication and language, physical development, vision and hearing, feeding, social and emotional development, learning, problem solving, play skills, and more.

Respite Care

Through Respite Care, we provide parents of children with special needs the short periods of rest they need to relieve stress, renew energy, and restore balance. Respite offers a safe, supervised, fun environment for the children with one-on-one supervision. Families that have one or more children with special needs who are not receiving consistent respite services through another source, such as able, reliable family members or government assistance, are eligible.

Learning Opportunities

Kids On The Move offers an array of learning opportunities and impactful classes for children, teens, and families.

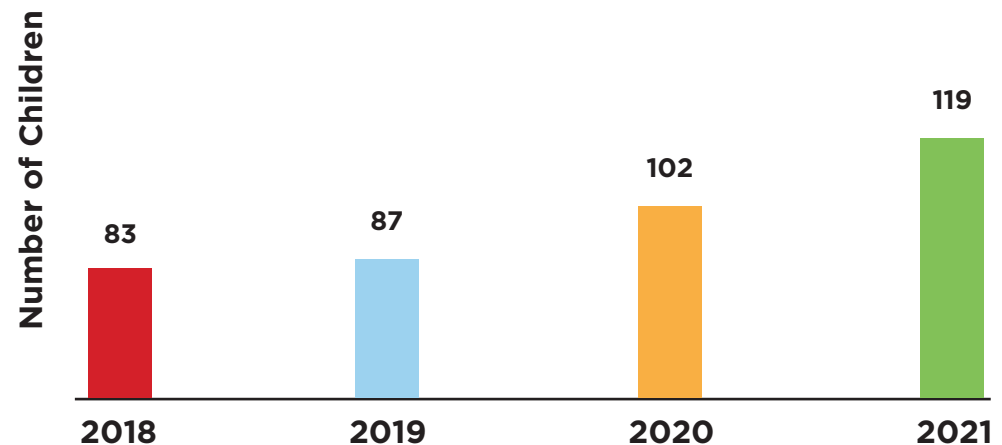
Autism Center

Overview

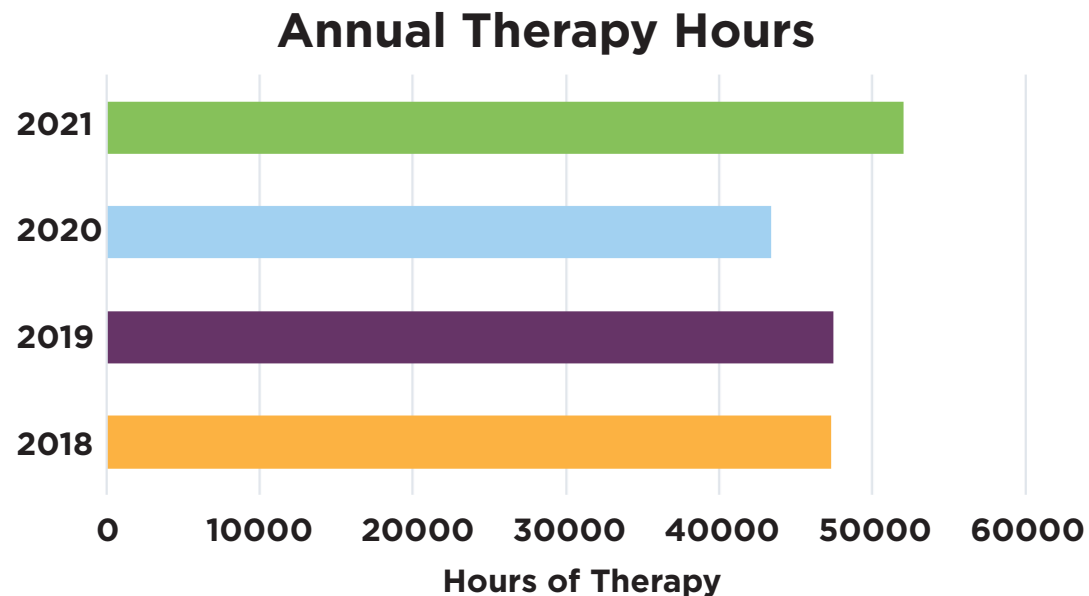
Our Autism Center empowers families by supporting children, from toddler to adolescence, with autism spectrum disorder, using applied behavior analysis (ABA). Parents and family members work with their child's clinical team to implement ABA therapy strategies to increase skills across domains such as language, communication, attention, social skills, daily living skills, as well as to decrease problem behaviors that are harmful to themselves and others. With a greater demand for autism services, families in our community are grateful for our increased capacity and the services we provide.

As a result of the generous support of our donors, we were able to overcome the challenges of the pandemic and increase the number of children enrolled by 14%. This enabled us in 2021 to serve an average of 119 children per month.

Children Enrolled



Our clients receive between 6 and 30 hours of ABA therapy per week depending on their individual needs. Our two clinic sites in Orem and St. George allow us to perform services in the clinic, in-home, and via tele-health throughout the state of Utah. In 2021, we increased client services by 17% offering a total of 52,060 hours of applied behavior analysis therapy.



We held two separate PEERS® (Program for the Education and Enrichment of Relational Skills) groups that served a total of 14 teens with autism. The parent survey taken before and after the class regarding their teen’s social skills showed an improvement by an average of 47%. The PEERS® program is made possible by individual donated funds.

Autism Center



Family Comments

In response to: “What has been helpful about your child’s ABA therapy at Kids On The Move?”

“He’s made leaps and bounds because of KOTM.”

“The creative ways the KOTM team help her, the ways to measure her progress, and repetition have worked great.”

“The integration of so many different activities in ABA, and the BCBA’s thoughts on how to approach behaviors has been so helpful.”

“I love to see [my child’s] improvements and his increased ability to tolerate things that he normally would have an issue with.”

“Everyone on his team listens to him and his input. We all work together to make the realistic requests a reality.”

“The improvement in my child is amazing!”

“Her therapy has significantly improved her skills that her school teachers (and we) want her to have.”

“YOU ARE ALL LIFESAVERS!”

Child Care

Overview

For over 25 years, Kids On The Move has operated an on-site child care program. What started as an innovative program to meet the needs of our employees, became a renowned sought-after program within the community because of our knowledge and expertise.

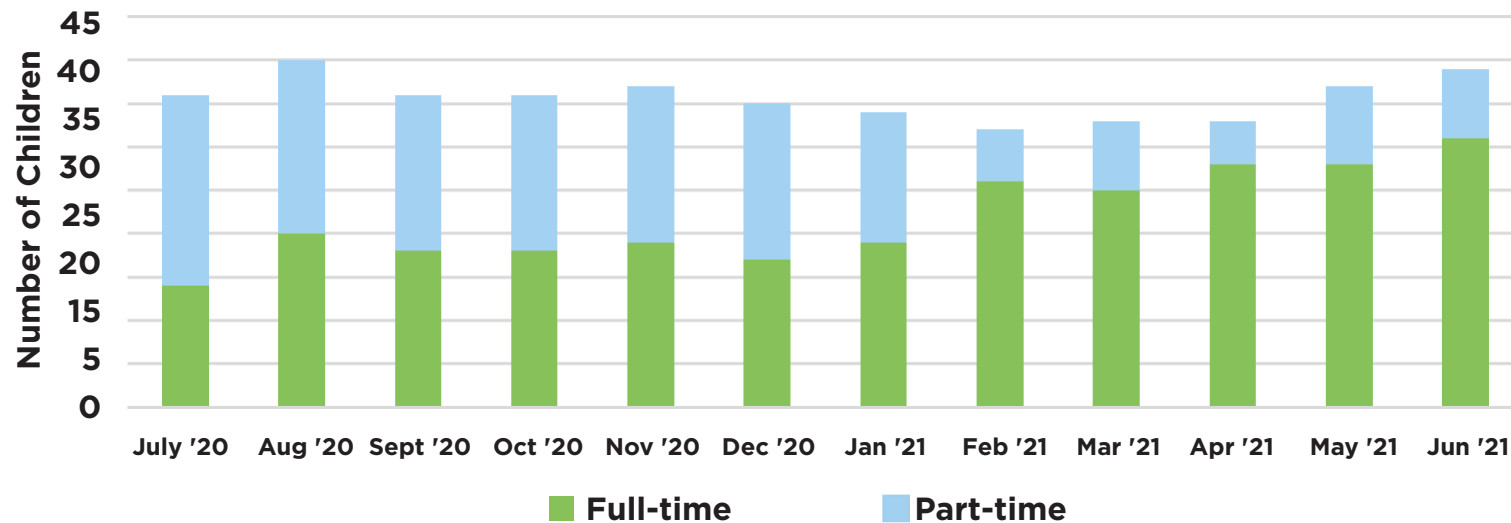
Our philosophy is to love, respect, and guide these little ones to be good problem solvers, kind to others, inclusive to those with disabilities, and feel joy in the learning process. In 2021, we introduced the Dandelion Nature Preschool to the four to six-year-olds. This program is an outside playschool (weather permitting) up to four hours a day, helping our children learn about the symbiotic relationship between humans and nature. This is a spectacular opportunity to introduce the life-giving force in a safe and nurturing way through a certified proven curriculum created especially for them.

The staff are carefully chosen to meet the professional standards expected in addition to completing ongoing education and training. Our staff take their responsibilities very seriously, realizing that what we do and say to these children influences their lives for years to come.

We strive to carry out our responsibilities in a manner that builds every child's well-being each day.

Child Care

Child Care Annual Enrollment



As families navigated the impact of the pandemic, the individual family needs shifted from part-time child care services to full-time care. “The Utah Division of Workforce Services documented the child care shortage in a report in March 2020. Researchers found that Utah needs 274 more licensed-center child care programs” (Child Care Access in Utah Work Force Services Report, March 2020). At Kids On The Move, we have scaled our child care to support up to 72 full-time children to provide additional high quality child care services to the community.

Thank you for your support and the gift of this extraordinary opportunity to serve families and children in such a meaningful way.

The Foster's Story

"We love Kids On The Move! We have two children who have attended the daycare since they were four months old.

"Their teachers have always been kind, loving, playful, and attentive.

"Our children have developed and grown through their curriculum.

"Kids On The Move is like family and we are so grateful for their influence in ours and our children's lives.

"Thanks!"

The Foster Family



Early Head Start

Strategic Program Goals:

At the beginning of each five-year grant cycle, the Early Head Start (EHS) program establishes goals for the families and staff. Each year these goals are evaluated and fine-tuned to address more specific aspects of these goals. We ensure performance standards are met by providing quality support and oversight.

Currently our goals are:

- An increase of overall health and wellness for all children, families, and staff.
- Strengthen data systems to support timely promotion of high-quality services to help identify the program strengths and weaknesses.
- Improve communication within all areas of the program to ensure families, staff, and community partners experience smoother processes.

Enrollment:

The Kids On The Move Early Head Start program is funded to serve 152 individuals, including children up to the age of three and pregnant women. Throughout fiscal year 2021, The Early Head Start Program served a total number of 277 individuals: 256 were children and 21 were pregnant women. This increased number is due to natural attrition and families leaving the area.

Fiscal Year 2021 Enrollment

Month	July 2020	Aug 2020	Sept 2020	Oct 2020	Nov 2020	Dec 2020	Jan 2021	Feb 2021	Mar 2021	April 2021	May 2021	June 2021
Enrolled	146	146	148	151	151	146	148	152	152	142	148	148
%Enrolled	96%	96%	97%	99%	99%	96%	97%	100%	100%	93%	97%	97%

Early Head Start families can be eligible for our program in many different ways. Although families below the poverty line take priority, other criteria such as foster care, disabilities, homelessness, and other community needs are factors for eligibility.

Current Eligibility Factors

Program Eligibility	Number	Percent
Income at or below 130% of federal poverty line	215	78%
Public assistance, such as TANF and SSI	8	3%
Foster care	3	1%
Homeless	21	8%
Eligibility based on other community needs	30	10%



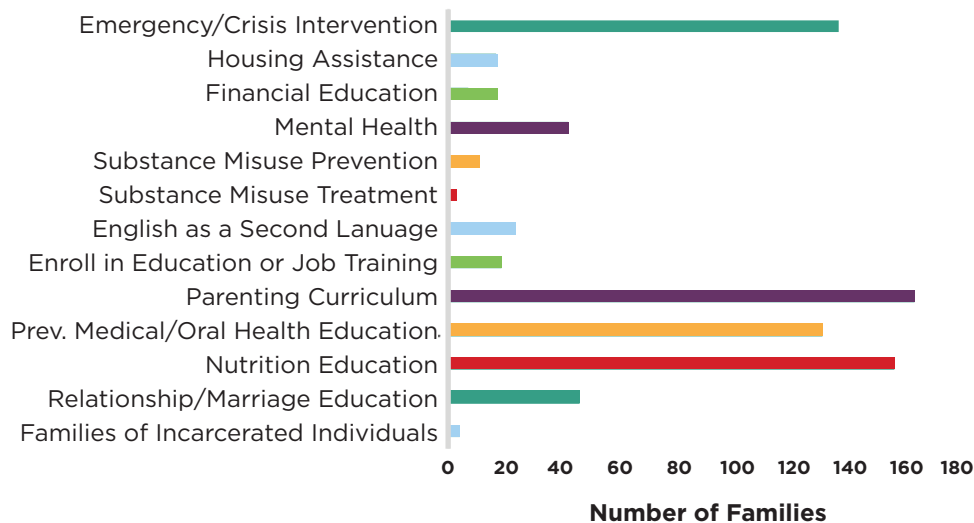
The Saquic's Story

“Early Head Start at Kids On The Move is a very important program for us because it’s moving my family forward. I am incredibly grateful that it allows me to work. It’s also bringing the best education for my daughter, because there are things we don’t know, especially being in a new country. We are learning new things every day. I feel so happy and grateful for this program’s immense support.” (Translated from Spanish)

Early Head Start

Early Head Start provides community services and resources for the families it serves to help them overcome challenges they face. The graph below shows the resources and services provided during the 2020-2021 year.

Program Service to Promote Family Outcomes



Family Engagement:

Early Head Start believes that a child’s social, emotional, cognitive, and academic development is strengthened when educators and families work together. Family involvement and communication creates a strong foundation for trust and development which enhances a child’s learning process. To foster family involvement, the interactions between educators, families, and children must be positive, purposeful, consistent, and reciprocal. Kids On The Move’s promotion of these types of activities to encourage family engagement in 2020-2021, included bi-monthly socialization events for the home-based program, the FACT (Fathers and Children Together) book program to encourage father involvement in both center and home-based programs, and the community-based Kids On The Move Health Fair.

Monthly Attendance for Bi-monthly Socializations 2020-2021

Month	July 2020*	Aug 2020	Sept 2020	Oct 2020	Nov 2020	Dec 2020	Jan 2021	Feb 2021	March 2021	April 2021	May 2021	June 2021	Total
Attending	0	59	99	70	123	54	136	97	158	106	123	99	1124

*July 2020 - closed for COVID-19

School Readiness — Preparation for Kindergarten:

Early Head Start implements strategies and practices to support children and families when transitioning out of Early Head Start successfully. School readiness is accomplished through ongoing observations, parent reports, and assessments using a research-based assessment tool for birth to age three called HELP, Hawaii Early Learning Profile. HELP allows us to assess the child in all developmental areas and transition planning for each child and family into Head Start or another program as soon as possible. Head Start and family collaborations about the children's progress during the program year provide strategies to support the advocacy for the education and development of their child. This tool is used to monitor the individual child's progress in 8 developmental areas:

- Sensory
- Cognitive
- Receptive
- Expressive
- Gross Motor
- Fine Motor
- Social and Emotional
- Self Help

Infants and toddlers enrolled in the HELP 2020-2021 program year have made progress toward achieving school readiness across all areas. The quarterly assessments compiled include staff observations and parent reporting. Each quarter has a fluid enrollment and unenrollment, therefore we are unable to compare the data quarter to quarter.

Early Head Start's school readiness goals are:

- For children to show increased ability to self-regulate
- Communicate needs through verbal and non-verbal communication
- Promote creativity and problem-solving skills and explore their environment
- Children will express emotions in developmentally appropriate ways
- Children will explore their environment using all their senses and gross and fine motor skills.



Early Head Start

Health Care Information:

The health of the children and women we serve is paramount to our program. We encourage regular check-ups with medical and dental professionals. The pandemic made it difficult for many families to receive this regular care. But as offices reopen, the families and children will be able to see their medical professionals with greater frequency.

Health Outcomes

Medical/Dental Update	Program Percentage of Children Compliant During 2020-2021
Access to Medical Care	96%
Access to Dental Care	90%
Children with Health Insurance	96%
Up to date on Immunizations	74%
Up to date on Dental Checks	90%



Focus Area Two Monitoring Review:

Every few years the Early Head Start program is evaluated to guarantee that we are complying with all requirements put forth in the Federal Head Start Performance Standards. The emphasis of the Focus Area Two monitoring is on Program Design and Management, Education and Child Development, Health Program Services, Family and Community Engagement, ERSEA (Eligibility, Recruitment, Selection, Enrollment, and Attendance), and Fiscal Infrastructure. Through this process, we demonstrate our ability to run a high-quality program that promotes positive outcomes and school readiness for children and their families.

Kids On The Move completed the Focus Area Two review in March 2021. Four policies were identified as areas where procedures could use strengthening. The improvements were completed, and the review was closed on February 18, 2022. The improvements were as follows:

- Developed and implemented a process for staff to review and verify all documents available for determination of eligibility.
- Improved program policies and procedures related to staff who willfully violate eligibility determination.
- Ensured a Mental Health consultant assisted teachers in improving classroom management and teaching practices.
- Reviewed the background clearance policy and implemented a tracking and monitoring system to ensure all staff clearances were obtained prior to hire.

The Early Head Start team and administrative staff worked closely together to develop improved processes that were quickly implemented within the Early Head Start program. The improved background clearance process was so successful, we determined it to be “best practice” and implemented the process across all programs within Kids On The Move.



In-kind Donations:

The Early Head Start grant requires each grantee to collect in-kind donations, most of which come in the form of volunteer hours. This Non-federal Share amount for Kids On The Move is \$522,102.24 for FY2021. Unfortunately, the COVID-19 pandemic continued to be a hindrance for many individuals in donating their time. Kids On The Move requested a waiver for the Non-federal Share in the amount of \$400,000, which was granted.



Total EHS Volunteers:
350



Total EHS Volunteer Hours:
3,493.05



Total EHS In-kind Dollars:
\$122,102.24

EHS In-kind Donation Dollar Amounts:

Volunteer Total:
\$54,286.60

Materials Total:
\$67,815.64

In-kind Dollar Amount Total:
\$122,102.24

In-kind Donors

The following organizations and individuals provided material in-kind donations:

Alcazar Dalila	Lindsey Turner
Angelica Rowley	Matthew Hatch
Anonymous	Metafraze
ChildPlus	Mountainland RSVP
Costco Warehouse	Rachel Stephens Family
Deer Sams	Rocky Mountain ATV
Division of Emergency Management	Ruby Snap Cookies
Erika Reed	Shannon Dale
Innovative Healthcare Solutions	Sofia Atwood
Jena Christensen Smith	Stephanie Lawrence
Josh Rosen	Sue Dean-Tenzca
Juan Saenz	Suzanne Ivie
Katie Carr Family	Tabitha's Way: Local Food Pantry
Kaylie Lowry Family	Tessa Reed
Kirsten Weakly	Tracie Laloata
Kneaders	Utah Food Bank
Lakeshore Learning Materials	Waxie Sanitary Supplies
Latter-day Saint Humanitarian Center	WIC of American Fork

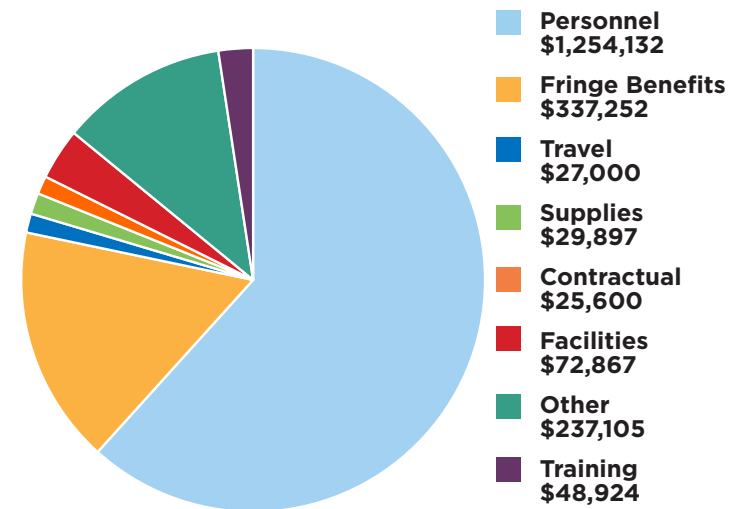


Early Head Start

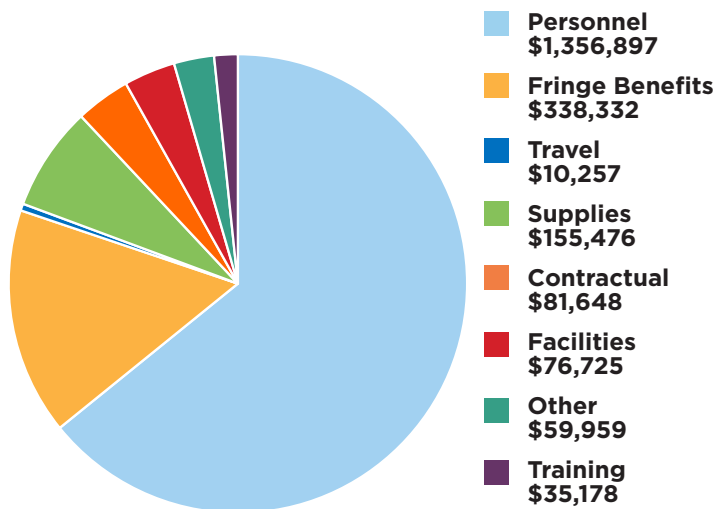
Food Bank:

We continued the collaboration with the Utah County Food Bank. Kids On The Move has an on-site storehouse with canned and dried goods. We are happy to have been able to support 1,028 families and children with much-needed food items.

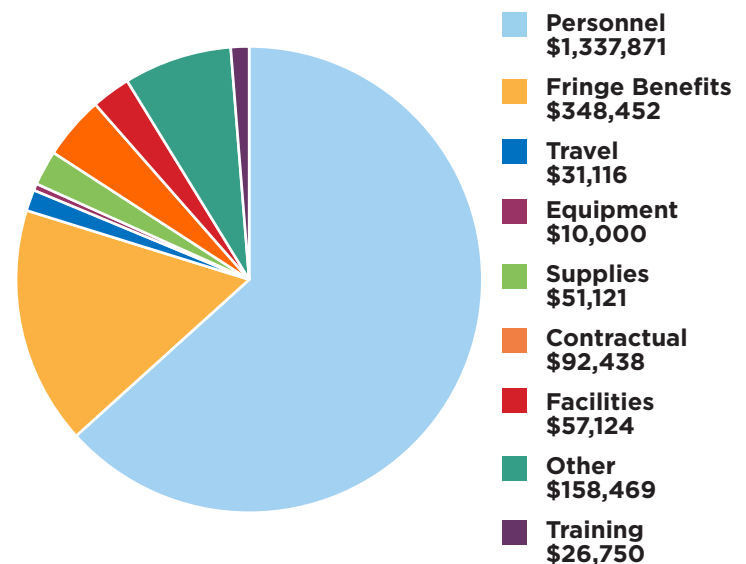
FY 2021 Budget - \$2,032,777



FY 2021 Actual Expenses - \$2,114,472



FY 2022 Budget - \$2,113,341



Annual Financial Audit:

by Squire and Co.

FY21 Audit Completed March 2022

Our auditors, Squire and Co., issued a clean audit opinion to our financial statements. In their letter to management, they determined that the statements made in the audit were correct in all material respects. Squire did recommend some ways to improve our accounting system. Before the audit work was finished, all the recommended improvements were completed.



Early Intervention

Overview

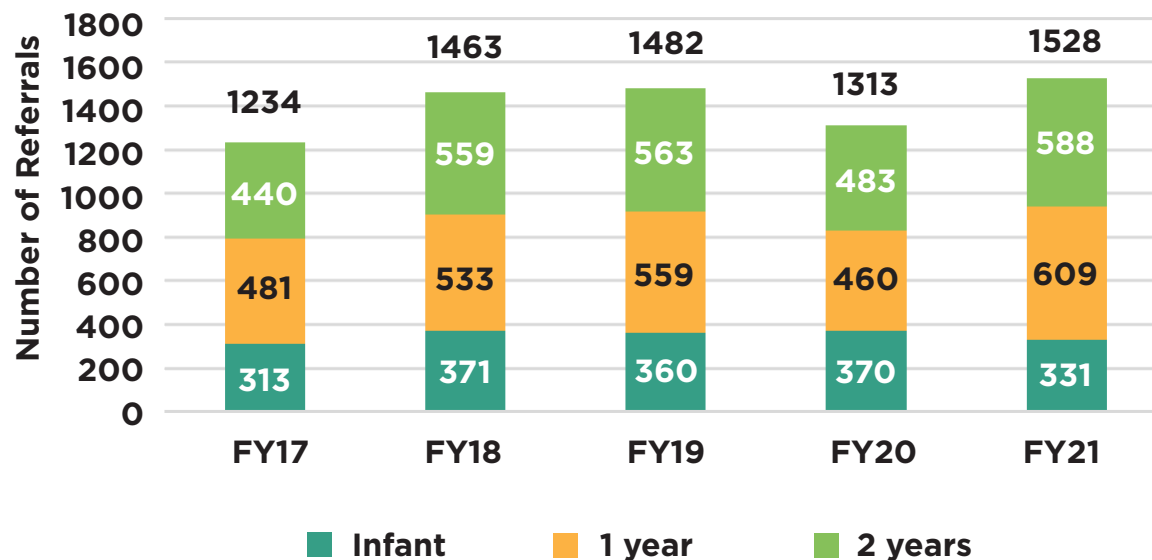
Early Intervention provides services and support to children birth to three years of age who are displaying disabilities or delays within their developmental progress. At Kids On The Move, our Early Intervention program serves families and children who reside within the Alpine School District boundaries, the largest school district in the state of Utah. We strive for best practice, evidence-based interventions. We model our services around the following key principles from the Office of Special Education Programs, Technical Assistance Community of practice. These principles are:

- Infants and toddlers learn best through everyday experiences and interactions with familiar people in familiar contexts.
- All families, with the necessary supports and resources, can enhance their children's learning and development.
- The primary role of a service provider in early intervention is to work with and support family members and caregivers in children's lives.
- The early intervention process, from initial contact through transition, must be dynamic and individualized to reflect the child's and family members' preferences, learning styles and cultural beliefs.
- Individualized Family Service Plan (IFSP) outcomes must be functional and based on children's and families' needs and family-identified priorities.
- The family's priorities, needs and interests are addressed most appropriately by a primary provider who represents and receives team and community support.
- Interventions with young children and family members must be based on explicit principles, validated practices, best available research, and relevant laws and regulations.

Due to the population growth in northern Utah County (Alpine School District), we continue to have an influx of children needing early intervention services. Other than the slight dip in referrals due to COVID-19, the annual number of referrals continues to climb.

The State of Utah provides funding for 1,245 visits per month. On average, there are over 900 active children in our Early Intervention program each month. To meet this demand, Kids On The Move delivered an average of 1,753 scheduled visits each month. This equates to 21,036 appointments annually. Based on previous trends, we anticipate the annual number of children in need of services will increase.

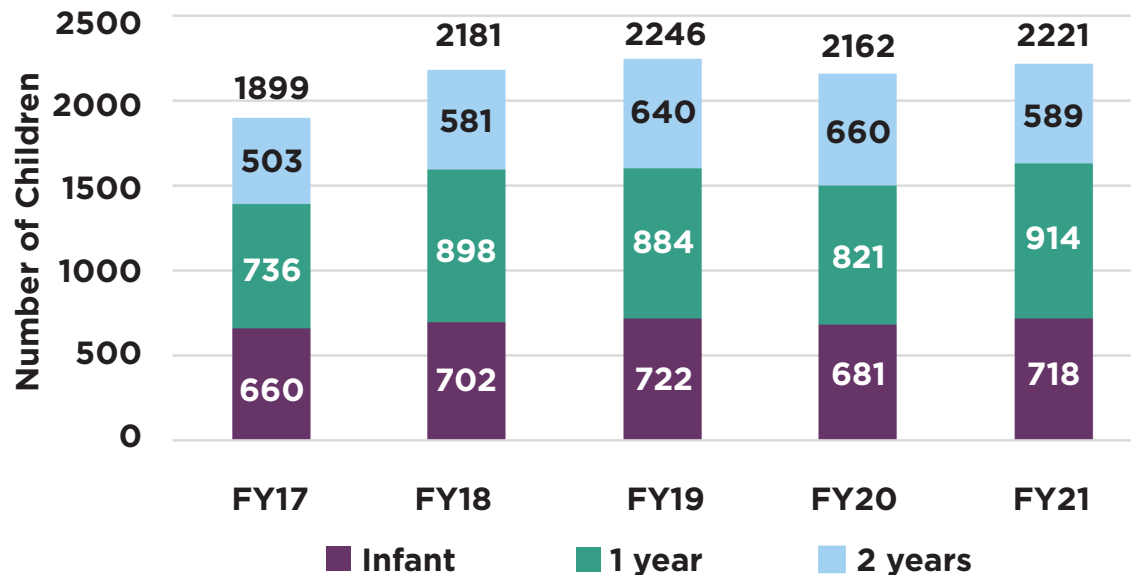
Children Referred to Early Intervention FY17-FY21



Early Intervention

The goal of Early Intervention is to provide the highest level of care to each child and his/her family. We continue to recruit and hire highly qualified professionals to ensure each child receives the services they require. These services may include speech and language therapy, physical and occupational therapy, developmental services, registered nursing services, social work, service coordination, and various other types of interventions. The Early Intervention program has been a pillar for children with developmental delays and their families. We are excited to continue to serve and support families within this growing community.

Annual Children Served in Early Intervention FY17 - FY21



Delilah's Story

"I didn't know Delilah had Down Syndrome until a couple of hours after her birth when the doctors saw something that alarmed them. It was four days after she was born that I got a phone call confirming that she did in fact have Down Syndrome. Later that night I went to visit her in the NICU and they gave me information about resources and programs. A week and a half later, Delilah came home on oxygen and the hospital told me to contact Kids On The Move's Early Intervention program.

"I sent KOTM an email and heard back super quickly. Everyone was very kind and gave me information about how they can help us, and by the time Delilah was 2 weeks old, we were getting the help we needed! Our visits started out over Zoom which then moved to in-home visits and ever since then, Delilah has been able to receive the therapy she needs to adapt to the world around her. Since the beginning, we were assigned to a service coordinator who has helped us out every step of the way. I love our service coordinator. She is so nice and we clicked right away! This program has blessed my sweet girl immensely."



Respite Care



Overview

The Respite Care program continues to offer a much-needed break for families with children with disabilities. Once a month, for three hours, parents and caregivers can rejuvenate and reset knowing that their child is being cared for by nurses, trained dedicated staff, and volunteers. Often, this is the only time during the month where the physical care of their child is not their primary focus.

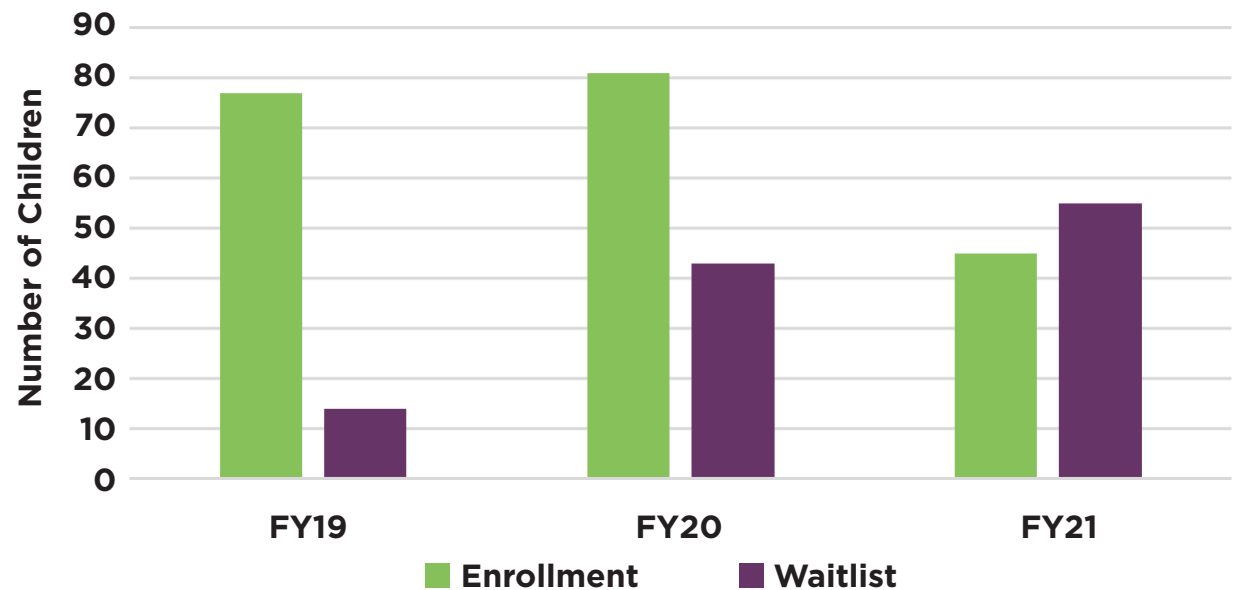
We provide respite care at three separate locations in Utah County in Orem, Lehi, and Springville and hope to expand to more areas throughout the state in the coming years. Each location accommodates between 7 to 10 children.

One mother wrote:

“We waited a long time to be blessed with respite care. The night we did the intake, I cried. I felt heard, validated, and relieved. The director spent time getting to know my son, me, and our family relieving so many worries. Our seven-year-old son asks every weekend if he gets to go the ‘childcare’ as he calls it. It makes my heart so glad that he has a place he wants to go and be without me.”

Prior to the pandemic, we maintained a steady enrollment rate between 75-80 children and still had children waiting for a space to become available. However, as with so many other programs, COVID-19 forced us to cut back on the number of children that could safely be enrolled. Not surprisingly, the waitlist continues to grow as the need for respite increases.

Respite Enrollment and Waitlist



We are very grateful for our 877 volunteers who donated 3,168 hours. The volunteers genuinely care, are excited to serve, and interact so positively with the children one-on-one. This program does not receive any federal or state funding and is 100% dependent on donor contributions. The cost for one child attending three hours of respite care once a month is \$204. The annual cost of supporting one child for a full year of respite is \$2,448. Our greatest need is to support all the children on the waitlist and to have additional donated, weekend locations. With your financial support, the families can relieve stress, renew energy, and restore balance while their child receives the care he/she needs.

Respite Care



Camilla's Story

"Our dear Camilla is a beautiful young girl who has multiple medical conditions. She was born in China and we adopted her at the age of four. We knew she had special needs, but we didn't know if her needs were mild or severe. After having her with us at home, we realized her needs were very complex, severe, and it was a whole new world for us.

"After a while, all we were doing was working and taking care of Camilla. We stopped our date nights, we didn't take our other children anywhere, there were no caregivers for Camilla, and we never got to do anything. We applied for Respite Care at Kids On The Move and waited.

"One night, we were having a conversation that we felt lonely, there was nowhere to turn, and felt like we couldn't do it anymore. Literally, after that conversation, we received a call from KOTM Respite Care that there was a spot for Camilla. What a blessing!

"Camilla loves Respite Care. I feel like KOTM Respite Care has become part of her team along with the doctors and school personnel. They are in our corner and willing to help out."

Volunteer Quotes

"I have a passion for working with individuals with special needs and wish to be able to do something more for them. I love the Respite Care program and everything it stands for. I can remember many times when I would have a rough week at school or I'd feel stressed about an upcoming exam or assignment and would come to do respite care, and all of my stresses and worries would seemingly disappear as I spent the night playing and laughing with these sweet souls. These individuals have such bright personalities and they always know how to make you smile."

- Volunteer Chloe C.

"I have come in and volunteered with Respite Care at Kids On The Move a few times. I have had so much fun doing it! The kids are fun to play with and have lots of energy. I love thinking about how much we help them and their parents."

- Volunteer Emily N.

"Each night I have volunteered, I have learned something new. Overall, it has been a very humbling experience. The kids have inspired me to live my life in a calm and deliberate way."

- Volunteer Mark M.

"I have volunteered at KOTM seven times and have loved my experience. I love working with the kids and it always brings me so much joy to be with them and see life through their lenses."

- Volunteer Megan V.



Volunteers



The community support provided to Kids On The Move in Fiscal Year 2021 was overwhelming. Individual volunteers, families, school clubs, churches, companies—the list goes on! We were inundated with groups wanting to give their time to help in the cause of empowering families.

Rocky Mountain University of Health Professions continued their annual tradition of serving Kids On The Move during United Way of Utah County's Day of Caring in September 2020. They asked for two service days so that they could involve more staff; we are immensely grateful for our newly painted play therapy room, refinished outdoor benches, and clean, landscaped play areas. For the holiday season, Kids On The Move coordinated with Rocky Mountain ATV, Unforgettable Coatings, and eleven amazing families from the community to sponsor Christmas for a record number of 24 families. Over \$17,000 worth of gifts were provided, along with love and hope at the end of a hard year for many.



In the spring, volunteers helped in classrooms and cleaned toys, relieving busy teachers of tightened requirements due to COVID-19. We started a deep “spring-cleaning,” which was a massive undertaking and volunteers were essential for removing old furniture, assembling new furniture, and repainting, which continued through the entire summer. Outside they spread fresh woodchips and refilled our sandboxes.

Throughout the year, Respite Care was fully staffed with volunteers playing with children. We eased into providing childcare during parenting classes on weekday evenings. Nursing students completed fieldwork hours and observed child development by helping teachers in Early Head Start classrooms. Handmade donations like weighted blankets and therapy games were received.

Christmas Sponsorship Story

"We were very emotional this Christmas because of the kindness and generosity you showed our family this year. We weren't able to afford gifts this year and without your help, it would have been a difficult time of year. The kids were so excited about the sweet books you got them, and for the coats and gloves that will keep them warm while they play outside. I'm also so grateful for the pots and pans; I love to cook for my family and these are much needed additions to our kitchen. We loved meeting your family and could just feel your love and kindness. We couldn't see our family this year with COVID-19 and meeting your family made us feel like our hearts were full. Thank you for making our Christmas such a special one."

-Christmas sponsorship family



Total KOTM Volunteers:
2,520



Total KOTM Volunteer Hours:
11,651.77



Total KOTM Volunteer Dollars:
\$277,373.94



To see our current
volunteer opportunities, go to
www.kotm.org/volunteer-portal

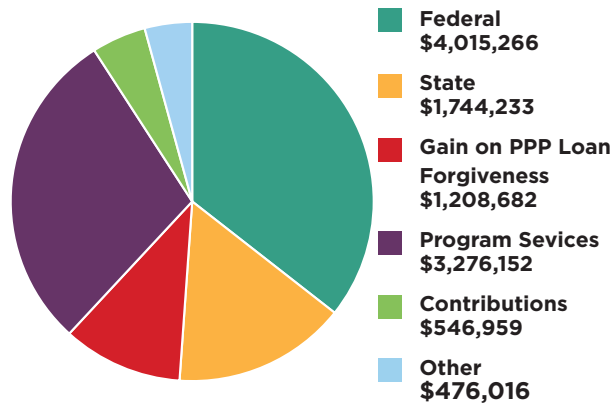


Finances



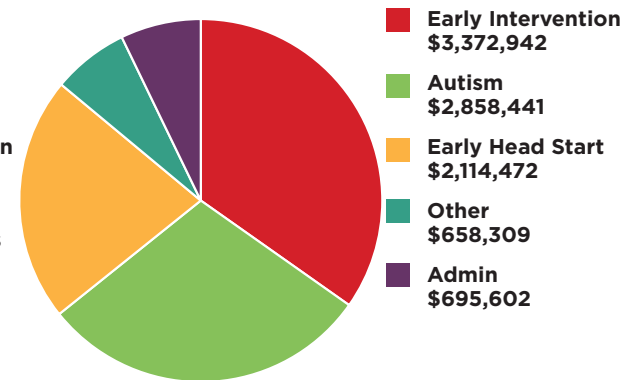
FY Revenue

Total \$11,267,308

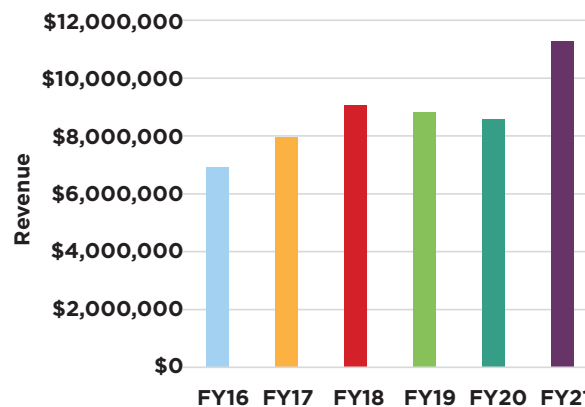


FY Expenses

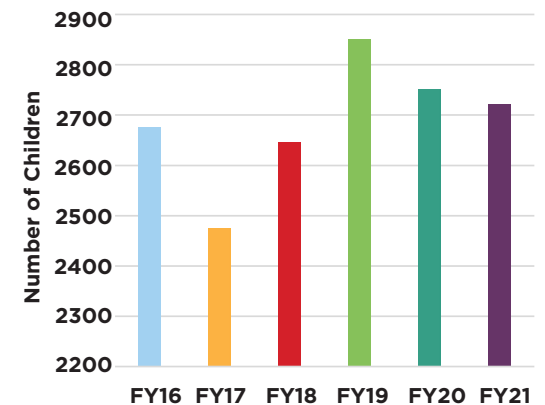
Total \$9,699,766



Revenue Trends



Enrollment Trends



Finances are audited annually and the reports are available online at kotm.org. Our audited financial results are found on page 25.

Donors

Aldo and Valerie Bussio
Anonymous
Amazon Smile
Dr. Ernest Bailey
Beesley Family Foundation
Benevolent & Protective Order of Elks
(Provo Division)
Blake's Helping Hands Foundation
Bruce L. Rothe 2012 Trust
Carrabba's Italian Grill
Child Family Foundation
Christy Anderson
Crimson Vista, Inc., Seth Nielson
Cross Charitable Foundation
Daniels Fund
DentalQore
Deseret Industries Community Grant
The Domani Group
Dominion Energy Grant
Dryden Technology Group, LLC
Ed Donakey
Edwards LifeSciences Foundation
Eldred Sunset Manor Foundation
Elks Provo Lodge 849
Eskuche Charitable
Fieldcraft Survival, Inc.
Flamm Family Foundation
Forever Young Foundation
Frandsen Morrill Advisors
Gibney Family Foundation
George and Dolores Dore Eccles Foundation
The Happy Factory
Henrie Family Charitable Trust
Henry W. & Leslie M. Eskuche Charitable
Foundation
Jackson Howard Foundation
James B. Loveland Memorial Foundation
James Gale
Jamie Wride
JEPS Foundation Trust
Jon Standing
Jonathan Krein
Joseph & Kathleen Sorenson Legacy
Foundation

Kahlert Foundation
Kai Khasbaatar
Kim Santiago
Kirsten Weakly
Larry H. Miller Foundation
Marion D. and Maxine C. Hanks Foundation
McCarthy Family Foundation
Metafrazee (formerly Same Day Translation)
Mountainland Association of Governments
MX Gives
O.C. Tanner Company
Orem City CDBG Funding
Parsons Family Foundation
Paul and Andrea Hadlock
Randy and Nancy Evensen
Ray and Tye Noorda Foundation
RC Willey
RedX
Richard Denning
Richard Rife
Robert Aagard
Rocky Mountain ATV
Rocky Mountain Power
Rotary Club - Orem City
Scott Livingston
Sharetix
Sleepy Ridge
Smith's Inspiring Donations
Sorenson Legacy Foundation
Stevenson Smith
Stirling Foundation
Suncrest Stake
Tabitha's Way Local Food Pantry
Thomas & Diane McNeill
Tolman Media
Wasatch Global Investors
Wayfair
William H. & Mattie Wattis Harris Foundation
Brenda and Rebecca Winegar
United Way of Utah County
Utah Center for Assistive Technology
Utah Department of Health - Baby Watch
Early Intervention Program
Val A. Green and Edith D. Green Foundation

Our generous donors help support thousands of children and families throughout Utah. Monetary gifts ensure Kids On The Move will continue to make a difference in the lives of individuals in need. The donations contributed to Kids On The Move aid families so they are a little better today than they were yesterday.





Families are our future!



KIDS ON THE MOVE VALUES

Our values for supporting the development of young children and families.



HOPE

CARING

INTEGRITY

EXPERTISE

EMPOWERMENT



kids on the move

empowering families, one child at a time

www.kotm.org • (801) 221-9930 • 475 West 260 North, Orem, Utah 84057