



kids on the move
empowering families, one child at a time



2020 Annual Report



Our Team

Chief Executive Officer (CEO)

Scott M. Bean

Vice President of Development (VPD)

Ruby Haddock

Kids On The Move

475 West 260 North

Orem, UT 84057

801.221.9930

development@kotm.org



Contents

4	Our Future
6	Our Mission
7	Board of Directors
8	Program Overview
11	Autism Center
13	Respite Care
15	Mental Health
17	Early Intervention
19	Early Head Start
26	Child Care
28	Volunteers
31	Finances
33	Donors
34	Heber Half Run For Autism



Our Future

2020: The Year of Pivoting from COVID-19

This past year took every one of us into uncharted territory with the COVID-19 pandemic.

The massive disruption caused by this once-in-a-lifetime event demanded that we quickly pivot to develop new alternatives for delivering face-to-face services. After all, quality personal interventions define us as an organization where we treat not just symptoms but people. It's a daunting question: How to continue delivering great services when we're trying to protect both staff and families from a worldwide viral threat?

Thanks to the generous and collaborative efforts of donors, Kids On The Move successfully bridged the funding gap and preserved the future for those children and families who need these essential services. We will continue to be there for the thousands of families who need us every year. We will move beyond COVID-19!

The pivoting we were forced to make as an organization, however, took its toll. Due to mandatory health-related restrictions and closures, KOTM experienced record low numbers of volunteers who provide the essential ingredient to a robust Respite Care experience for parents and caregivers. As the vaccine rolls out, helping us reach herd immunity, we are slowly ramping back up to normal.

COVID-19 restrictions have also fueled a rise in the already high mental health issues facing our young children and adolescents right now. Depression, anxiety and family-centered trauma events have escalated over the past year. Frustration steadily rises, then eventually boils over.

School closures – forcing students to isolate themselves in front of a computer screen for life learning – also restrict critical peer interaction that we need for cognitive and social development. Teen suicide, a topic we're reluctant to bring up out of fear and misunderstanding, is on the rise in our communities.

These mental health issues will frame the future for our children if we fail to address them head-on. Kids On The Move is actively engaged in the mental health conversation right now, growing our internal resources to address these many troubling signs. We need your help to make this happen!

Wherever you may be, my clarion call is this: Reach out to Kids On The Move and learn how you can make a real difference! I invite you to email me directly at ceo@kotm.org.

Kindest regards,

Scott Bean
CEO



Board of Directors

Christy Anderson

Dave McGinn

[Past Board Chair 2019/2020]

Ed Donakey

Ernie Bailey

Jonathan Krein

[Current Board Chair 2020-2021]

Julie Haupt

Kai Khasbaatar

Kim Santiago

Michael Frandsen

Richard Rife

Robert Parsons

Our Mission

In 2020 Kids On The Move provided innovative high quality, direct services to 2,790 children challenged by developmental delays, autism, many other disabilities, and poverty.

Special Education Best of State winner, Kids On The Move, exists to support the development of young children and families in our community. Our major service programs include: Early Intervention, Respite Care, Autism Center, Mental Health, Child Care and Early Head Start. In addition, Kids On The Move contributes time and resources to create and sustain community-wide networks of support.

Program Overview



AUTISM CENTER

The KOTM Autism Center is a leading provider for children from infancy through adolescence living with autism spectrum disorder. We offer Applied Behavior Analysis (ABA) Therapy services in our clinic, in client homes, or a combination of both. We also provide ABA Therapy via telehealth throughout the entire state of Utah.



RESPIRE CARE

Through Respite Care, we provide parents of children with special needs the short periods of rest they need to relieve stress, renew energy, and restore balance. Respite Care offers a safe, supervised, fun environment for the children with one-on-one supervision. Eligible families have one or more children with special needs who are not receiving consistent respite services through another source such as able, reliable family members or government assistance.



MENTAL HEALTH

In our Mental Health program, parents, children, families, and individuals address a wide range of important mental health issues with our licensed clinicians. Our services include psychological testing and individual, couples, family, teen, and child counseling services. We address issues important to families including depression, anxiety, ADHD, parenting, disabilities, coping with a medical diagnosis, grief, trauma, family and relationship challenges, life transitions, and more.



EARLY INTERVENTION

In Early Intervention, we know there are many wonderful and exciting opportunities for learning and growth during the first few years of life. We provide a free evaluation of a child's development. We serve children who have delays in the following areas: communication and language, physical development, vision and hearing, feeding, social and emotional development, learning, problem solving, play skills, and more.



EARLY HEAD START

Early Head Start is designed to enhance children's physical, social, emotional, and intellectual development by supporting parents in their critical parental role. The program aims to help children develop a lifelong love of learning. Early Head Start services include educational, social, medical, dental, nutritional, and mental health, along with parent involvement activities for families. The cost of involvement in the program is completely free.



CHILD CARE

Our Child Care program has been in operation for 25+ years. It is a fully-licensed program with three separate classrooms, segregated by age and development. Our caring teachers provide support and instruction for children from six weeks to first grade. KOTM Child Care staff strive to carry out their responsibilities in a manner that builds every child's well-being each and every day.

Autism Center

Overview

Our Autism Center supports children throughout the state of Utah. Autism, or autism spectrum disorder (ASD), refers to a broad range of conditions characterized by challenges with social skills, repetitive behaviors, speech, and nonverbal communication. During 2020, our Autism Center was able to utilize telehealth services to continue serving children with autism during the COVID-19 pandemic. Our Board Certified Behavior Analysts (BCBAs) and Registered Behavior Technicians (RBTs) were able to still help our clients through these virtual sessions.

BCBAs are masters level clinicians and oversee all of the therapy conducted in the Autism Center. Each child in the Autism Center is assigned a BCBA who performs assessments, selects treatment goals, writes treatment plans, and trains RBTs on how to work with children with autism.

By the end of 2020, the Autism Center employed 14 BCBAs, 4 Behavior Analysts in Training, and 53 RBTs. The Autism Center served 137 clients in 2020. In addition, the Autism Center had 15 teenagers with autism participate in our PEERS group. This class helps teens who have trouble making friends learn valuable skills about interacting with others.

Connor's Story

Connor is my seventeen year old son and has autism. In recent years Connor has had next to no social interaction. This is something he recognized and wanted to change but he didn't know how to make that happen and I didn't know how to help him. When I found the PEERS group at Kids On The Move I was ecstatic! Finally something we could do after years of worrying.

His results could not be better. He now initiates conversations, makes comments, asks questions, and interjects himself into conversations within our family regularly. That is a huge change for him! He now spends time with a group of four other teens that get together to play games several times a week. He has a lot of fun during those times and it makes me want to cry tears of joy when I hear him laughing away having a great time with friends, a sound I have not heard near enough of during his teenage years. He has also joined a club at his school where he has even more potential to build more friendships. None of this would have happened without PEERS and I am so grateful! I can now rest easy knowing Connor is on a better path socially and also knowing we have the tools to keep that going.

Respite Care



Overview

2020 was a year of growth at Respite Care. We did not anticipate being closed from March 13th to June 1st because of COVID-19. But during the time of closure and after reopening, we grew in ways we were not expecting. We were able to improve our program in the areas of the children's individual needs, staff communication, and most importantly health and safety.

On average, we had 90 children enrolled in our program, with 879 volunteers donating 3,157 hours of their time to become friends to the children. This was very important because from March to September, most of the children were isolated at their homes or with only their caregivers.

We currently have four respite locations in Utah — Orem, Lehi, Springville, and St. George. Our families of children with special needs receive a three-hour break once a month on a Friday or Saturday night to relieve stress, renew energy, and restore balance.

Thank you to all our donors — our volunteers, our monetary donors, and anyone who has helped in any way with Respite Care. You make this program possible for the families and the children. You are changing lives for the better!

Sebastian's Story

We love Kids On The Move Respite Care! Sebastian loves the staff and going every month. When we arrive a little bit early, he gets really excited in the car. The staff play with him and watch him carefully. He's a runner!

Looking back, at the end of age one, we noticed Sebastian wasn't verbal or walking. He couldn't communicate at all. At two, we were able to teach him some sign language, but he would get frustrated and start having behavior problems. He received a diagnosis of autism.

KOTM Respite has helped with his behaviors. Respite gives Sebastian time to be himself. During the week, he is at school and in therapy. He has to work hard. At respite, he gets time to let down, run around, and have fun.

With respite, I feel like my husband and I have time for each other and talk about things that are important. Respite Care is the only thing that makes it possible for us to take a break with each other.

Mental Health

Overview

The Mental Health program at Kids On The Move continued to grow and serve the community in 2020. At KOTM we are passionate about helping children, teens, and families. We provide a wide range of mental health services including individual, family, teen, and child therapy services. We address issues including depression, anxiety, ADHD, parenting, disabilities, coping with a medical diagnosis, grief, trauma, family and relationship challenges, life transitions, and more.

Our clinicians focus on fostering resilience, strengthening coping skills, and deepening relationships to help individuals and families reach their full potential. We recognize the importance of supporting each person's own strengths to add to his/her well-being and growth.

In 2020, 45 individuals were served in the Kids On The Move's Mental Health program, a 36% increase from 2019. The Mental Health program added telehealth therapy this year to accommodate individuals and families during the COVID-19 pandemic. We were able to provide therapy to individuals and families face-to-face and virtually. The KOTM Mental Health program gained two interns.

Katie's Story

Katie is our ten-year-old daughter we referred to Kids On The Move due to concerns of anxiety and aggression.

Before we brought Katie to therapy, she had a lot of anxiety and anger. She worried about everything. It was hard to reason with her when she was so anxious. Her emotions would get so strong that she'd become argumentative and aggressive towards her siblings. It was very difficult for our family.

We didn't know how to help Katie. Since bringing our daughter to Kids On The Move, we feel we have made a breakthrough. Katie likes meeting with her therapist, and she's learning some good coping skills.

It is easier for Katie to tell us what's bothering her rather than her acting out. I feel like our therapist is helping our daughter.





Early Intervention

Overview

Research indicates the time between birth and age three are the most important years in a child's development. Babies and toddlers have lots of new skills to learn, from lifting their heads to saying their first words! Some infants and toddlers meet developmental milestones more slowly than expected. This is called a 'developmental delay.' Some children have health conditions that may lead to developmental delays - such as certain genetic disorders, birth defects or a vision or hearing loss.

Early intervention can help these little ones catch up in their development. We provide highly trained early childhood work together with families to help eligible babies and toddlers acquire the skills that typically develop during the first three years of life, including: Physical Skills, Communication Skills, Self Help Skills, Social Skills, and Problem Solving Skills.

We started out the year with 909 children enrolled in our program. We welcomed an additional 1,311 little ones over the course of the year, so we were able to help 2,220 children in 2020 - and we are grateful to have the trust of so many families in our community!

Ivy's Story

We have been working with Kids On The Move for about a year now and have had a great experience! My daughter Ivy has a severe speech delay and, with the help of Kids On The Move Early Intervention, has made so many improvements over the last year.

We went from Ivy communicating with lots of points and grunts to copying lots of animal noises, using a handful of signs, and trying to vocalize her feelings first instead of having a meltdown.

We've been lucky to work with a handful of amazing women who were all so sweet and helpful. Everyone knew what they were doing and helped me feel empowered to help my daughter with her speech.

Early Head Start

Strategic Program Goals:

At the beginning of each five (5) year grant cycle, the Early Head Start program states goals for the families and staff. Each year these goals are evaluated and fine tuned to address more specific aspects of these goals. Currently our goals are:

1. An increase of overall health and wellness for all parents and staff.
2. Strengthen data systems to support timely promotion of high-quality services to help identify the program strengths and weaknesses.
3. Improve communication within all areas of the program to ensure families, staff, and community partners experience smoother processes.
4. Ensure performance standards are met by providing quality support and oversight.

Enrollment:

The Kids On The Move Early Head Start program is funded to serve 152 individuals, including children up to the age of three and pregnant women. However, throughout the year 2020, as children aged out of the program and because of natural attrition, Early Head Start served a total of 260 individuals; 239 were children and the additional 21 people were pregnant women. We average about nine new enrollments a month; which equates to 6% of the total we are funded to serve.

Funded Enrollment Percentage												
Month	Jul '19	Aug '19	Sep '19	Oct '19	Nov '19	Dec '19	Jan '20	Feb '20	Mar '20	Apr '20	May '20	Jun '20
# Enrolled	112	117	118	117	122	123	138	152	152	150	149	151
% Enrolled	73%	76%	77%	76%	80%	81%	90%	100%	100%	98%	98%	99%

We have a funded enrollment of 152 infants and toddlers, in which we offer year-round home-based and center-based options. We serve 112 home based children and pregnant women. The center-based option serves 40 infants and toddlers.

Program Eligibility	#	%
Income at or below 100% federal poverty line*	151	58%
Receiving Public Assistance - TANF and/or SSI	10	4%
Children in Foster Care	5	2%
Homeless	27	11%
Other type of need	35	13%
Income between 100% - 130% of federal poverty line*	32	12%

*Federal Poverty Guideline for 2020 - 100% for a family of four is \$25,750

Family Engagement:

Early Head Start believes that a child’s social, emotional, cognitive, and academic development is strengthened when educators and families work together. As a child experiences positive relationships between educators and families, they learn to trust the adult educators thus the learning process is strengthened and enhanced. Family involvement and communication create a strong foundation of learning and development. To foster family involvement, the interactions between educators and families must be positive, purposeful, consistent, and reciprocal. Prior to the pandemic, we had excellent attendance with more than half of our home-based families attending the socialization events. Beginning March 2020, due to the Corona virus, we transitioned to virtual visits that continued through the remainder of the fiscal year.

Socialization for fiscal year 2019-2020									
Month	Jul	Aug	Sep	Oct	Nov	Dec	Jan	Feb	TOTAL
# Attending	75	42	136	123	97	65	34	91	663

Throughout the year Early Head Start sponsors socialization events for the children and families in the program. These events provide a time for families to come together and learn while having fun. During these events, a meal is provided for each member of the families attending. Families are encouraged to participate in age appropriate group activities as well. Unfortunately, the COVID-19 pandemic had everyone scrambling at the end of the fiscal year where we were unable to safely gather. Although the state lock-down was to initially last only 2 weeks, in the end, we were unable to gather during the final quarter of the year.

Health Care Information:

The health of the children and women we serve is paramount to our program. We encourage regular updates with medical and dental professionals. The pandemic made it difficult for many families to receive this regular care, but as offices reopen, the families and children will be able to see their medical professionals with greater frequency.

Medical/Dental Update	Program Percentage of Children Compliant During 2019-2020
Had access to a Medical Home	90%
Had access to a Dental Home	66%
Children with Health Insurance	75%
Up to date on Immunizations	80.78%
Up to date on Dental Checks	57.6%

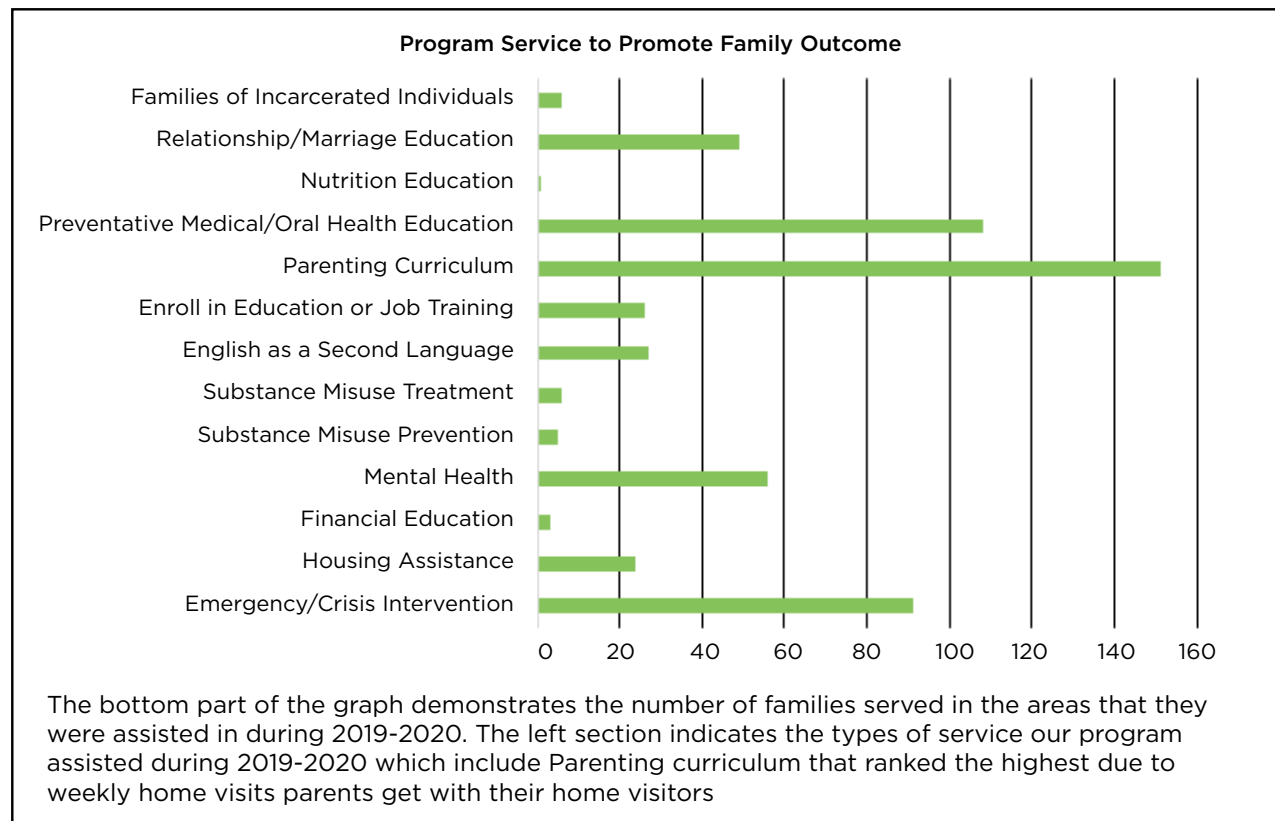
School Readiness - Preparation for Kindergarten:

School readiness is accomplished through ongoing observations and parent reports using a research based assessment tool for birth to age 3 called HELP, Hawai’i Early Learning Profile. This tool is used to monitor individual children’s progress in 8 developmental areas:

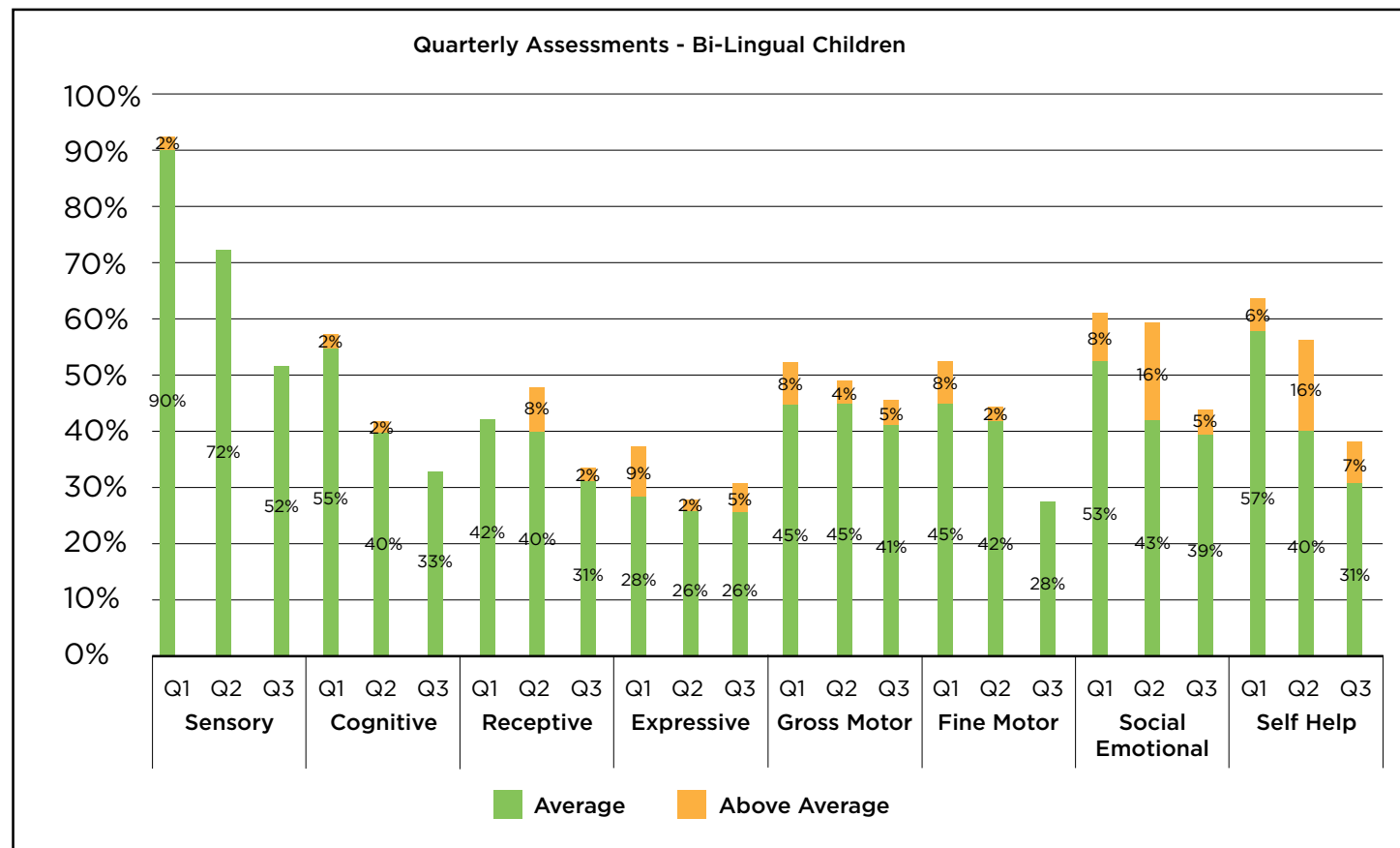
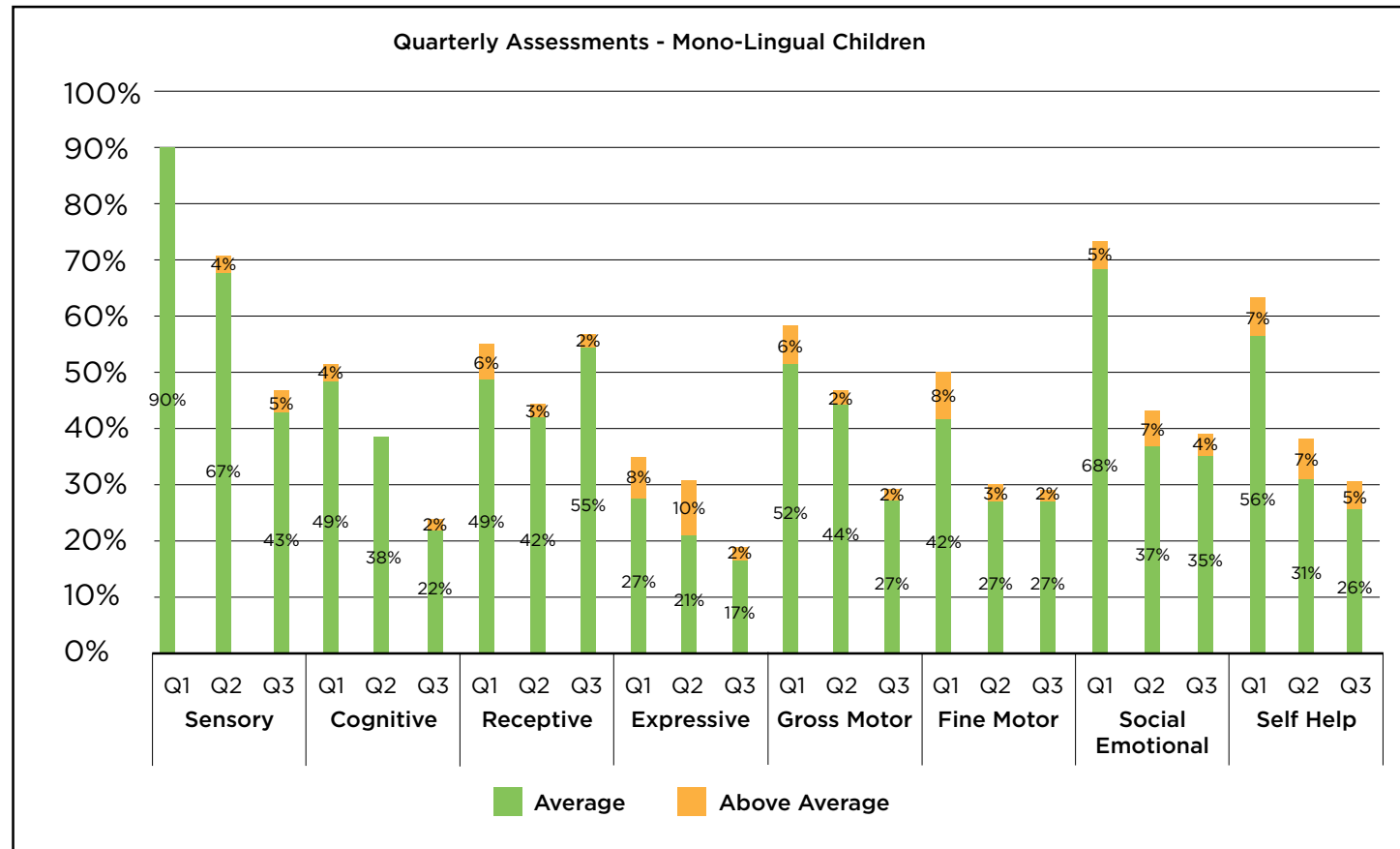
- Sensory
- Cognitive
- Receptive
- Expressive
- Gross Motor
- Fine Motor
- Social and Emotional
- Self Help



Infants and toddlers enrolled in the 2019-2020 program year have made progress toward achieving school readiness across all the domains. The quarterly assessments compiled include staff observations and parent reporting. Unfortunately, due to the pandemic and statewide lockdown, we were unable to obtain the 4th quarter assessment. Each quarter has a fluid enrollment and unenrollment, therefore we are unable to compare the data quarter to quarter. However, the infants and toddlers who had continued in the program made constant and consistent progress from quarter 1 through quarter 3.



School Readiness – Preparation for Kindergarten (Continued):



Focus Area One Monitoring Review:

On June 1-5, 2020, a Focus Area One Monitoring Review of the Kids On The Move Early Head Start program was conducted. Based on the information gathered during this review, the program had one area of non-compliance. The program was found lacking in its approach of ensuring the delivery of continuous high-quality health services, defined as not having an accurate monitoring system to help parents stay current with their child’s health visits (well-child checks, immunizations and dental screenings). The requirement is to have a Health Service Advisory Committee that involves program parents who meet regularly. This committee has been formed, and checks put in place to make sure that we are receiving the information that the children are receiving their health visits. This finding has therefore been corrected and closed with the office of Head Start.

Federal Funds:

As a recipient of federal funds, we are carrying out our fiduciary duty as managers and officers of Kids On The Move. We understand the importance of being good stewards of the funds we receive and we strive to control cost, increase efficiencies, and maximize our impact on the community.

Annual Independent Audit:

The fiscal year ended June 30, 2020 and a financial audit was conducted by Squire & Co., PC. The auditors opinion was clean and unmodified in respect to the financial statements. The audit reported one finding that required additional verification which the auditors felt needed to be brought to the attention of the Board of Directors. Kids On The Move has addressed these findings prior to the issuance of the audit report.

Section II – Financial Statement Findings

2020-001 Effective internal controls include procedures to ensure year end balances are accurate. Some of the organization procedures regarding these balances were inadequate, necessitating material adjustment to the finance statements during the audit process.

Management Response:

2020-001 Key staff turnover resulted in certain procedural knowledge not being transferred effectively. The auditors and management identified areas for improvement. In consultation with the auditors, management has supplemented its internal procedures to resolve any further issues for future periods.

Financials:

Total Public and Private Funds Received 2019-2020

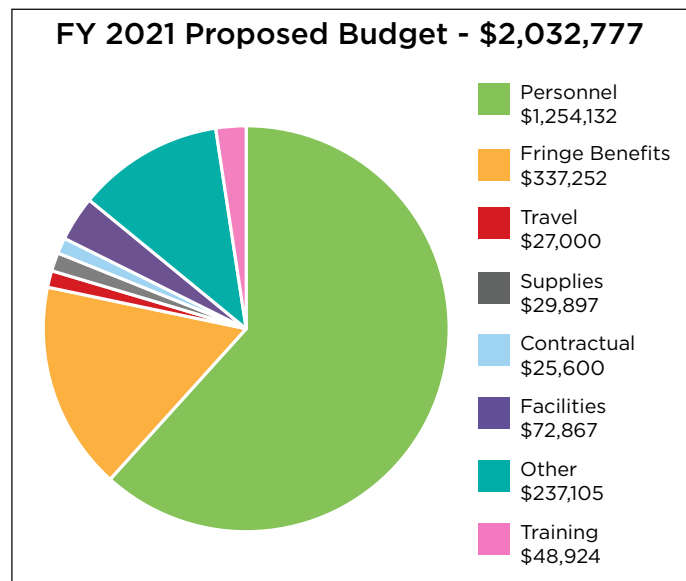
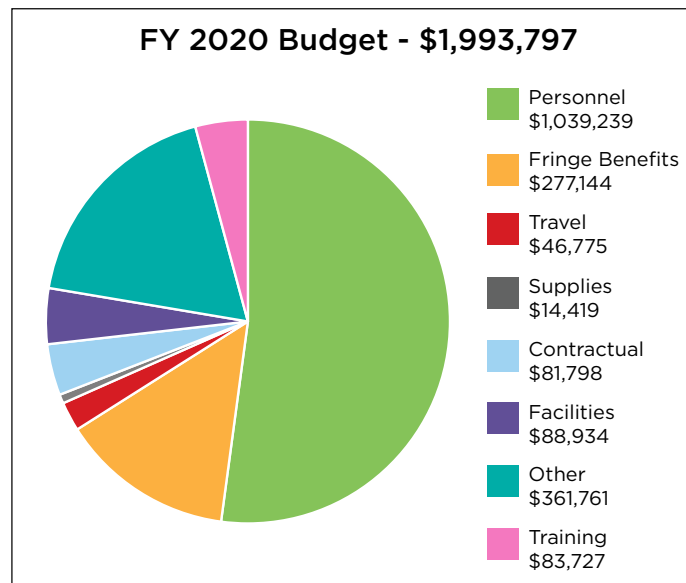
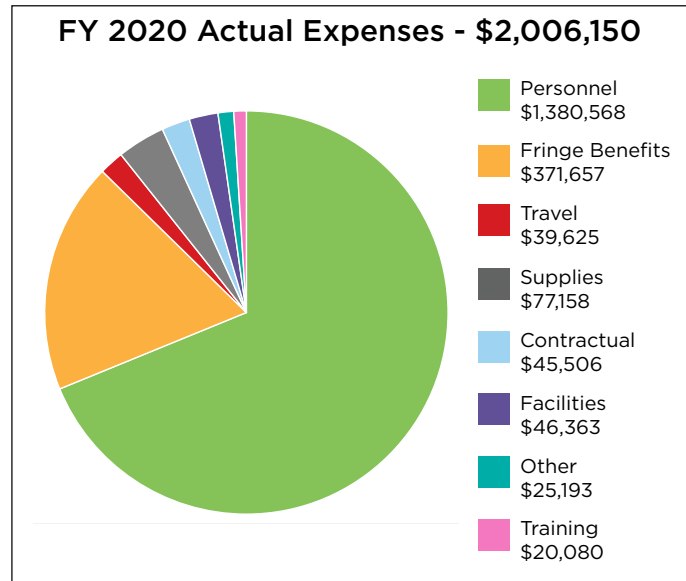
Head Start Grant:	\$1,969,147
Head Start Training Grant:	\$44,803
Combined Total:	\$2,013,950

Cash Contributions:

Other Revenue (if any):	\$300
Child Care Food Program:	\$44,532

Head Start Grand Total: \$2,063,782

CDBG Funds Received:	\$5,000
CDBG Funds Expended:	\$5,000



In-kind Donations:

We have a very generous community surrounding us. The number of hours they volunteer and all they donate to our program is significant.

1,112 Total Volunteers

201 Current and Former Parent Volunteers

30,849 Total Hours Served

Donations Dollar Amount

\$368,223 Volunteer Total

\$147,885 Materials Total

\$516,118 Total In-Kind Dollar Amount

In-kind Donors:

The following organizations and individuals provided material in-kind donations.

- Alfa Martinez \$300 - cash donation
- Mountainland Head Start
- Bullfrog Spas
- Chick-Fil-A
- Costco Warehouse
- Days for Girls
- DDI Advantage
- Deseret Industries
- Same Day Translation
- Tabitha's Way Local Food Pantry
- The Charleston at Cedar Hills
- The Grainger Foundation
- Utah Department of Health
- Utah Food Bank
- Wayfair
- Rocky Mountain ATV
- State of Utah
- US Synthetic
- Wasatch Mental Health
- RSVP: Retired and Senior Volunteer Program
- Center for Women and Children in Crisis
- Rocky Mountain University of Health Professionals

Food Bank:

In 2020 we started a new collaboration with the Utah County Food Bank. During the first six (6) months we had very encouraging numbers. The KOTM team distributed 586 food packages for this time frame.



Child Care

Overview

Kids On The Move Child Care has been in operation for 25+ years. In 2020, we served 38 children during emergency COVID-19 class size mandate. We have four classrooms; infants, toddlers, 3-yr-old preschool, 4- and 5-yr-old preschool. We also offer an AM and/or a PM preschool option.

Our philosophy is to love, respect and guide these little ones to be good problem solvers, kind to others, and feel joy in the learning process.

The staff are carefully chosen to meet the professional standards expected in addition to completing ongoing education and training. KOTM Child Care staff take this responsibility very seriously, realizing that what we do and say to these children influences their lives for years to come.

We strive to carry out our responsibilities in a manner that builds every child's well-being each and every day.

Thank you for your support and the gift of this extraordinary opportunity to serve families and children in such a meaningful way.

The Angel Family

We started bringing our kids to Kids On The Move Child Care about two years ago. The bond between our boys and the teachers grew fast. I was nervous putting my son into a daycare and we looked at many others but felt the most comfortable here. All of the teachers are wonderful and are able to accommodate for kids with all different needs.

One of the things that we enjoy is having pictures of the kids sent to us as they do activities throughout the week. They communicate really well and keep track of everything they do for your child in the day so that if you have any questions they can quickly show you.

We now have our three boys going here and I couldn't be happier. Many people I know also had children come to this center and talk about the amazing things they have done for their family. The Child Care Coordinator, Marj, is very involved and we have been able to go to her with any questions or concerns. The kids always come home so happy and I don't have to worry if they've been taken care of and treated right. KOTM Child Care has been such a help to us!

Volunteers

Volunteer Report

Fiscal Year 2020 was an incredible and unique year for volunteering at Kids On The Move.

In addition to serving in Respite Care and providing childcare during parenting classes, volunteers made it possible to host a superb Alumni Party in the fall and to thank our community partners at a lovely Appreciation Luncheon in the winter. Rocky Mountain University of Health Professionals and US Synthetics weeded and painted and refreshed our building during United Way's Annual Day of Caring. To spread some holiday magic, Rocky Mountain ATV and Wayfair sponsored Christmas for 13 families. A whopping 68 Eagle Scout projects were donated near the turn of the year, ranging from fun playground additions to materials for our staff to use in homes during therapies.

Volunteering was put on pause due to COVID-19 in mid-March. EHS parents tutored their children in goals set with their care team, greatly increasing our volunteer hours. In May, we sent out a request for hand sewn masks and were answered with an outpouring of support. Thirty-four volunteers spent 365 hours sewing masks and, with a donation by the State of Utah, we received over 1,700 cloth masks.

Respite Care resumed in person volunteering in June with the help of conscientious volunteers who were willing to follow guidelines, answer health questionnaires, wear masks, get their temperatures taken, and sanitize their hands every thirty minutes.

So much of Kids On The Move's ability to grow, meet family's needs, and be resilient is thanks to our community support. Our total FY 2020 volunteer contributions:

- 2,377 volunteers
- 35,972 hours of service
- \$502,455 estimated value of volunteers

To see how to get involved, visit: www.kotm.org/volunteer-portal

"Thank you so much for giving me this opportunity to work with these amazing kids. They have humbled me in so many ways that I cannot use a single word to describe the joy and hope they have brought to me. I wish this respite volunteer program continues to progress and bring hope to the lives of others."
-Ellen Wu, Respite Care Volunteer

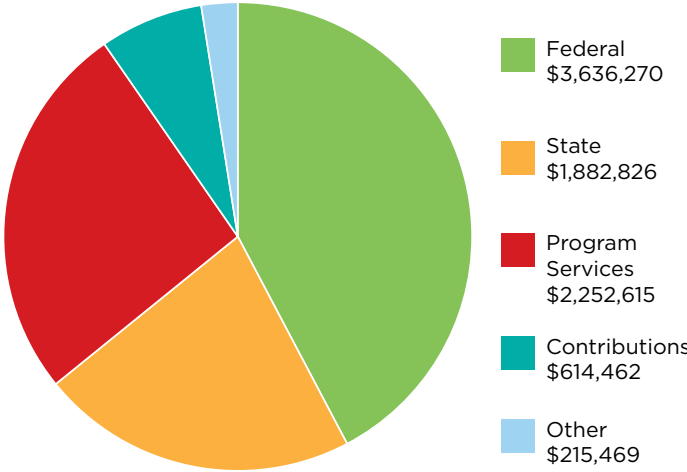




Finances

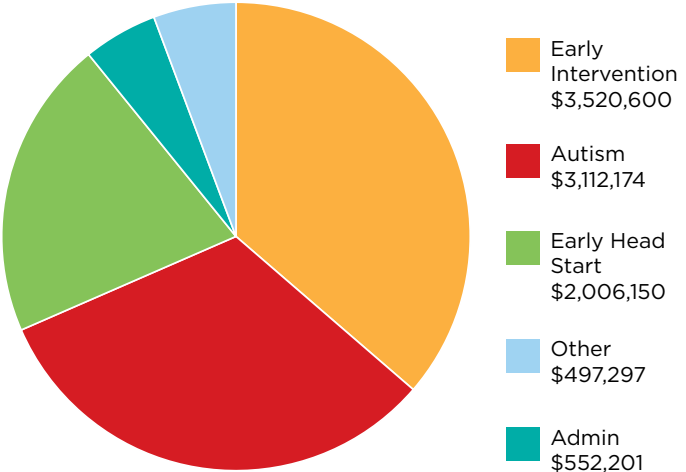
FY Revenue

Total \$8,601,642

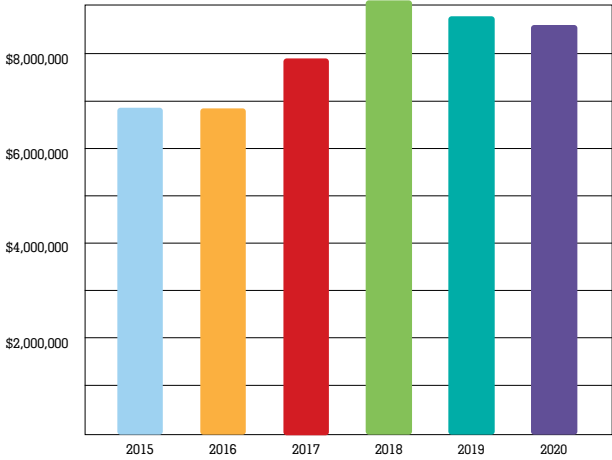


FY Expenses

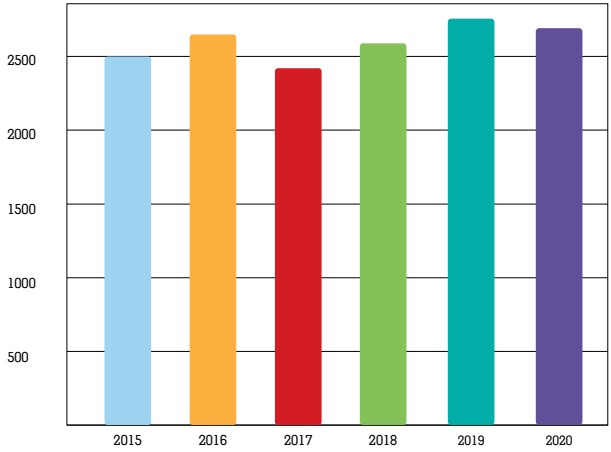
Total \$9,688,422



Revenue Trends



Enrollment Trends



Finances are audited annually and the reports are available online at KOTM.ORG. Our audit found no findings for 2020.

Donors

Our generous donors help support thousands of children and families throughout Utah. Monetary gifts ensure Kids On The Move will continue making a difference in the lives of individuals in need. The donations contributed to KOTM aid families so they are a little better today than they were yesterday.

ABC 4 - Good4Utah / CW30
Aldo & Valerie Bussio
Aleson Ponce Andres
Amazon Smile
America First Credit Union
Anonymous
AT&T
Autism Council of Utah
Benevity Community Impact Fund
Bennett Communications
Boostability
Boy Scouts of America
Brigham Young University
Chick-fil-A
Christy Anderson
Costco
Daniels Fund
Dave McGinn
Deseret Industries
Dominion Energy
Ed Donakey
Edward Lifesciences Foundation
Ernie Bailey
FaceBook
Fieldcraft Survival, Inc.
Forever Young Foundation
George S. & Dolores Dore' Eccles Foundation
Google
Hale Centre Theatre
Haunted Half
Heber Valley Police Department
Heber Valley Tourism
Heber Valley Tourism & Economic Development Agency
Henrie Family Charitable Trust
Henry W. & Leslie M. Eskuche Charitable Foundation

Herbert I. & Elsa B. Michael Foundation
Holiday Inn Express & Suites
Intermountain Healthcare
James B. Loveland Memorial Foundation
Jamie Wride
JEPS Foundation
Joan & Tim Fenton Family Foundation
Jonathan Krein
Joseph & Kathleen Sorenson Legacy Foundation
Julie Haupt
JustServe.org
Kahlert Foundation
Kai Khasbaatar
Karl & Hilary Barksdale
Kim Santiago
Log Me In
Michael Frandsen
Mountainland Association of Governments
National Ability Center
NuSkin International
Orem City
Parsons Family Foundation
Randy & Nancy Evensen
Ray & Tye Noorda Foundation
Richard Rife
Robert Parsons
Rocky Mountain ATV
Rocky Mountain Power
Rocky Mountain University
Roseman University of Health Sciences
Runtastic Events
Salt Lake Community College

Sebo Marketing
Sharetix
Sorenson Legacy Foundation
State of Utah
Stripe
Tabitha's Way
The Happy Factory
Thomas & Diane McNeill
Truist
Unforgettable Coatings
United Way of Utah County
Utah Community Credit Union
Utah County Cares
Utah Department of Health - Baby Watch Early Intervention Program
Utah Department of Health - Childcare
Val A. Green & Edith D. Green Foundation
Vivint Gives Back Foundation
VLCM
Walmart
Wasatch Global
Wayfair
Zermatt Resort
Zions Bank

Heber Half

The Heber Half Run For Autism

The third annual Heber Half occurred the summer of 2020. This year was unique with the COVID-19 pandemic. Although we were expecting 2,500 people, we had fewer participants due to the coronavirus restrictions. In total we had 1,786 runners with 1,408 at the live race and 378 people who participated in our virtual run.

This half marathon, 5k, and All Abilities ½ mile run was created to raise awareness and acceptance for those with autism. Proceeds from the race augment the Autism Center funding and provide much-needed scholarships and other critical family services.

The course itself is beautiful, with the half marathon starting line nestled back in a stunning forested canyon glen that gently slopes downhill, going past forest land, lakes, and amazing city views. Temperatures are perfect. As you enter the outskirts of Heber City itself, the friendly townsfolk are out along the roadside cheering you on! Old Mill Elementary School made for a beautiful finish line.

The 5k and All Abilities ½ mile run draw an enthusiastic mix of young and young at heart, with everyone focused on the goal of raising awareness of autism and its impact on children and families.

We express heartfelt gratitude for the many agencies and support organizations from the local Heber Valley community who graciously work with Kids On The Move and Runtastic to bring this event to life.

Food trucks, vendors, massages, a blue foam machine and lots of other fun attractions at the finish line make it a fun-filled atmosphere for families to enjoy!

This is truly an inspiring and wonderful cause that everyone involved feels very passionate about.





kids on the move

empowering families, one child at a time

www.kotm.org

(801) 221-9930

475 West 260 North

Orem, Utah 84057